

Gx501^{v2}

The SHERMANN Audio **Gx501^{v2}** is a compact, three way, loudspeaker supplied in passive drive format.

Standard hardware includes a GS-TA3 flying track & safety tie set for use with SHERMANN Audio GS-F3 flying brackets or GS-W3 wall brackets.

Also supplied is a GSA1/35 stand mount adaptor to enable use with any good quality tripod stand or bass cabinet mounted extension pole.

Please note: Bar handles fitted to this model.



The **Gx501^{v2}** is a logical upgrade of the extremely successful original model which is in widespread use throughout the UK in theatres, churches, rental companies and the audio-visual community.

Version 2 maintains the high standard of speech and music clarity throughout the audio range with the added advantages of higher power handling and a modest weight reduction.

A smooth, highly efficient 15" bass drive unit features 4" voice coil and cone of optimum weight whilst a superb 1" compression driver offers subtle, accurate detail in the upper response band - both are British built.

Linking these two drive units is a European sourced 6.5" midrange - this driver is used in most of our 3 way models.

The **Gx501^{v2}** offers premium performance as a front-of-house PA box and may be flown, stand mounted or stacked.

Touring the Gx501^{v2}

Versatility is the keyword with all SHERMANN Audio products and the Gx501^{v2} has been designed to maximise use within a wide variety of system combinations.

This compact, lightweight multi role workhorse is supplied with two strategically placed handles to assist loading or stacking.

A fully recessed, heavy duty 35mm pole mount is supplied as standard along with a GS-TA3 flying track set for use with a GS-F3 flying bracket.

Installing the Gx501^{v2}

The numerous advantages of fully equipped SHERMANN Audio touring boxes are also available to the installer.

From a fully equipped instal model to a totally basic version with no handles, stand mount or flying fittings the Gx501^{v2} may also be specified in a variety of painted finishes.

Our expertise in the installation market allows us to offer superb sounding systems which are highly efficient, cost-effective and fully compatible with our customer's requirements.

Technical Specifications

System

Format	3 way Passive
Network	PCN-4
Nom' impedance	8 ohms
Hi-pass filter (-3dB point)	35Hz / 4th order
Rec' amp' power @ 8 ohm	250 - 500 watts rms
Continuous Programme	600 watts
Short term peak	1,000 watts

Performance

Sensitivity @ 1w/1m	99 dB
Maximum output	128 dB @ 1m
Frequency response	55 Hz - 18.5 KHz
Dispersion > 2.5 KHz	70° x 40°

Drive unit - LF

Drive unit size	381 mm / 15"
Voice coil diameter	102 mm / 4"
Chassis	cast aluminium
Magnet	Ferrite
Mounting	6mm caphead bolts x 4

Drive unit - MF

Drive unit size	165 mm / 6.5"
Voice coil diameter	38 mm / 1.5"
Chassis	cast aluminium
Magnet	Ferrite
Mounting	5mm caphead bolts x 4

Drive unit - HF

Drive unit exit	25 mm / 1"
Voice coil diameter	51 mm / 2"
Magnet	Ferrite
Diaphragm	titanium
Horn mounting	5mm c/s socket bolts x 4

Dimensions

Height	737 mm (29-00")
Depth	402 mm (15-83")
Width	466 mm (18-35")
External volume	111 lts (3-93 ft ³)
Weight	36.3 Kgs (79 lbs)

Crossover frequencies

High pass (full range mode)
35Hz 4th/8th order Linkwitz-Riley or Butterworth filtering

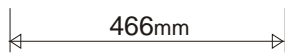
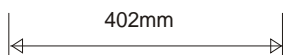
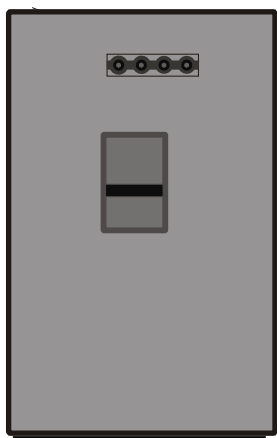
High pass (with SHERMANN Audio LF systems)
100 - 120Hz 4th order Linkwitz-Riley

* Options must be requested at time of ordering.

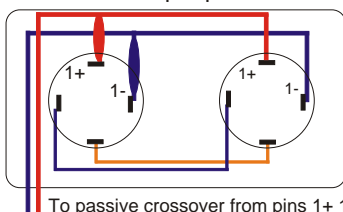
For optimum performance and system protection we recommend the use of a digital loudspeaker management unit within systems incorporating the Gx501^{v2}.

Klark-Teknik, BSS, Ashley, Void and XTA manufacture suitable models which may be loaded with preset configurations to operate with any SHERMANN Audio system.

Gx501^{v2}



NL4 input plate



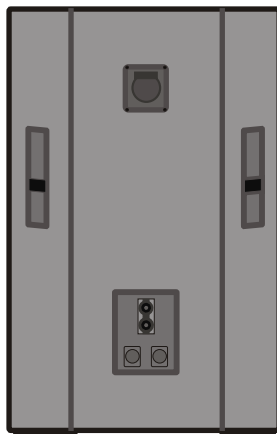
To passive crossover from pins 1+ 1-

Speaker Cables

We recommend the use of **2.5mm²** or **4mm²** OFC cabling with all SHERMANN Audio full range cabinets.

Wherever possible, cable lengths should not exceed **5 metres** for 4 ohm loading (2 x 8ohm Gx501 in parallel); cabinet link cables should not exceed 1 metre.

Please call for details on SHERMANN Audio cables - contact info' shown below.



Please note

We would like to draw your attention to the likelihood of hearing damage from prolonged exposure to high sound pressure levels.

Care should be taken when using cabinets in close proximity to the audience, musicians or artists.

For further information on the safe operation of any SHERMANN Audio product please fax, call or email us - contact details are shown below.

The information within this data sheet is offered as accurate and correct at the time of publication.

It is recommend that all technical information is verified with the company before inclusion in quotations or tender documents.

The company will not be held responsible for losses or difficulties arising from errors, changes or omissions.

S.P.A. Systems Ltd

Newtown, Powys, UK. SY16 1DZ

Tel: +44 (0)8456 44 22 09 (01686 622 997)

Fax: +44 (0)845644 2251

Email: sales@shermann.com

Web: www.shermann-audio.com

All data; Copyright - / Ken Hughes 1994 - 2004

Exterior fittings

Handle (top)

Steel recessed steel bar type

Handles (side)

Steel recessed steel bar type

Finish

Heavy duty black carpet or optional textured paint finish - any colour *

Grille

Heavy duty welded mesh on steel frame c/w acoustically transparent foam and engraved logo.

Skids

Bottom mounted easily replaced 15mm plywood skids

Flying Points (supplied)

GS-TA3 top and rear mounted track

Construction

Cabinet shell

15mm multi-laminate Scandinavian birch plywood.

Baffle assembly

25mm multi-laminate Scandinavian birch plywood.

Connections

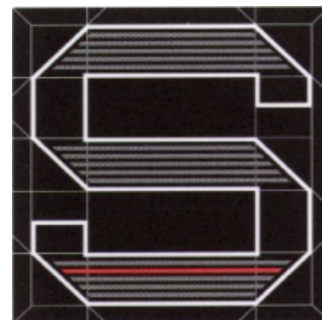
Speakon NL4

pin 1+ **hot** / pin 1- **cold**

Speakon NL4 (option) *

pin 2+ **hot** / pin 2- **cold**

Sockets are parallel linked on all pins eg. 1+ to 1+ (see diagram)



SHERMANN Audio

The Gold Series